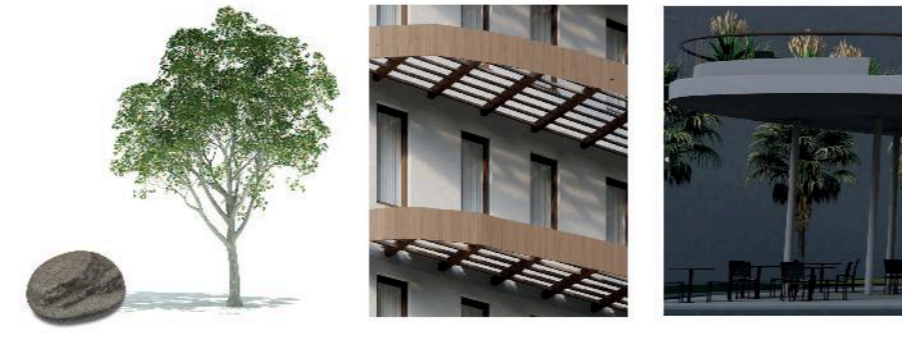
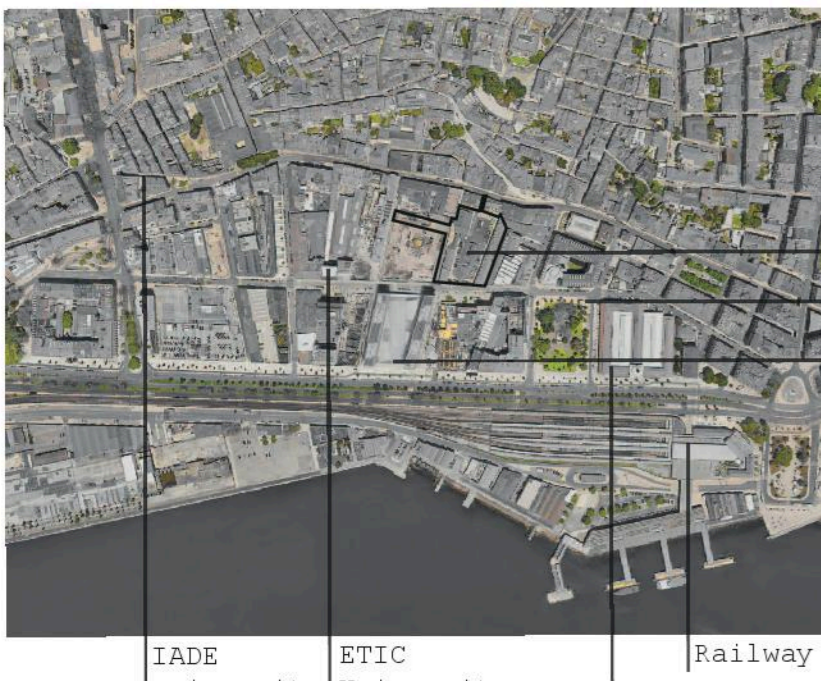


Waves of Lisbon

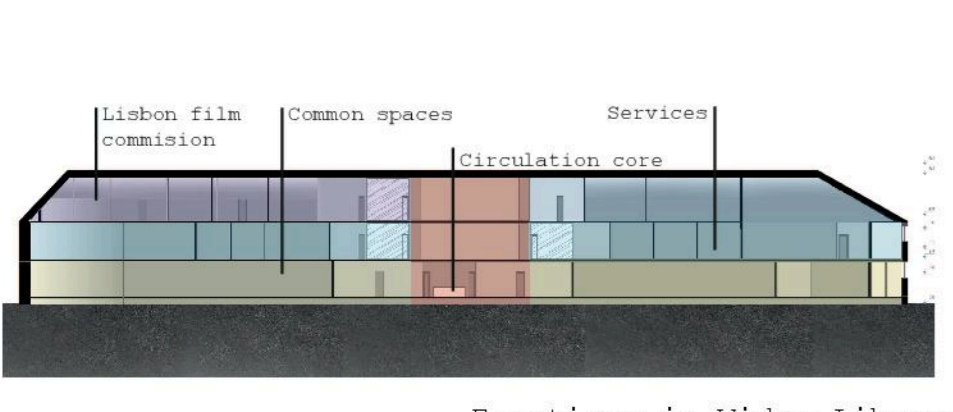
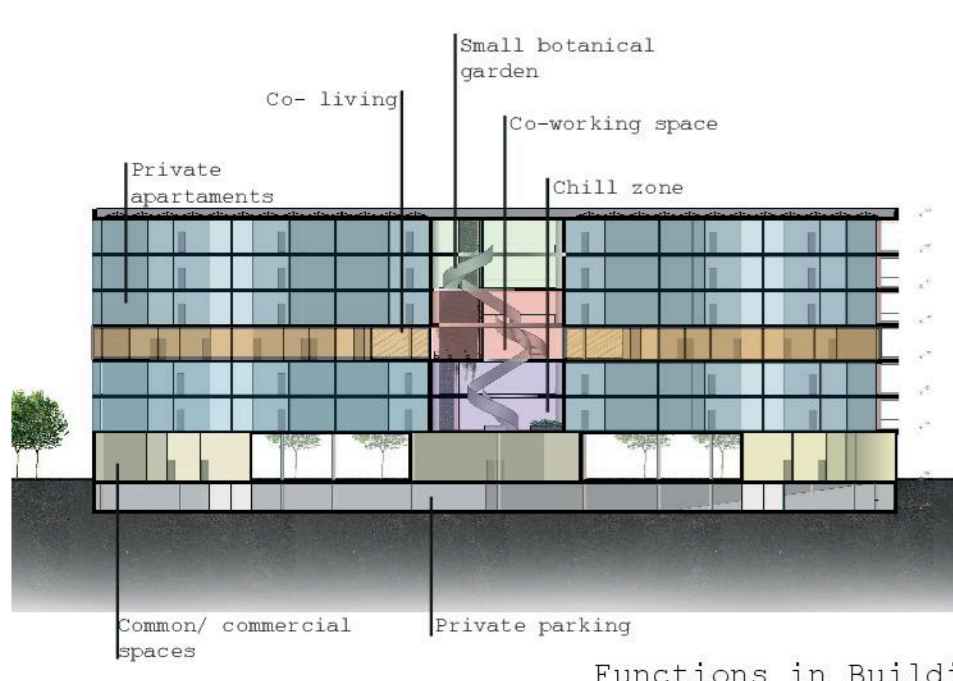
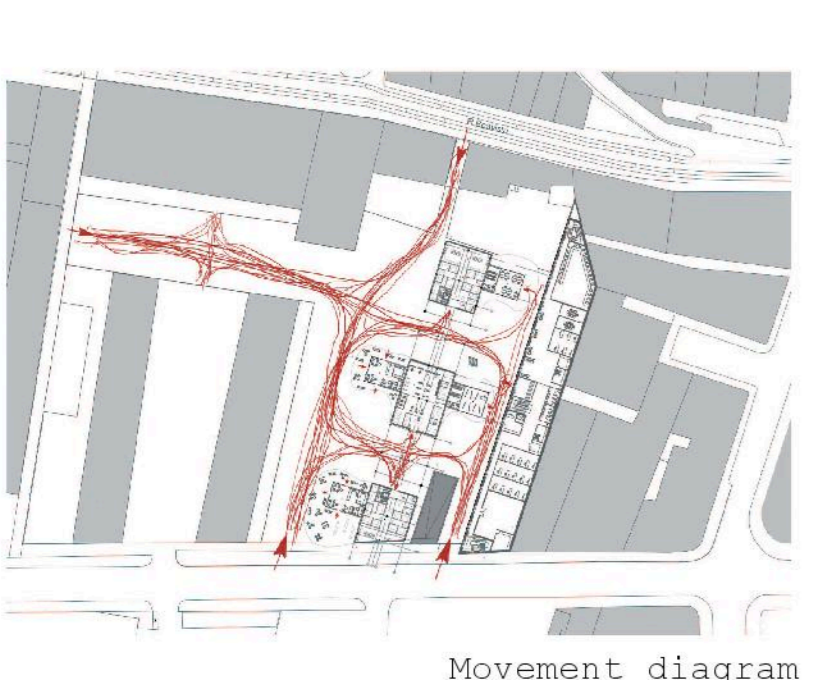
RISEBA, BARCH-3, Airta Bērziņa



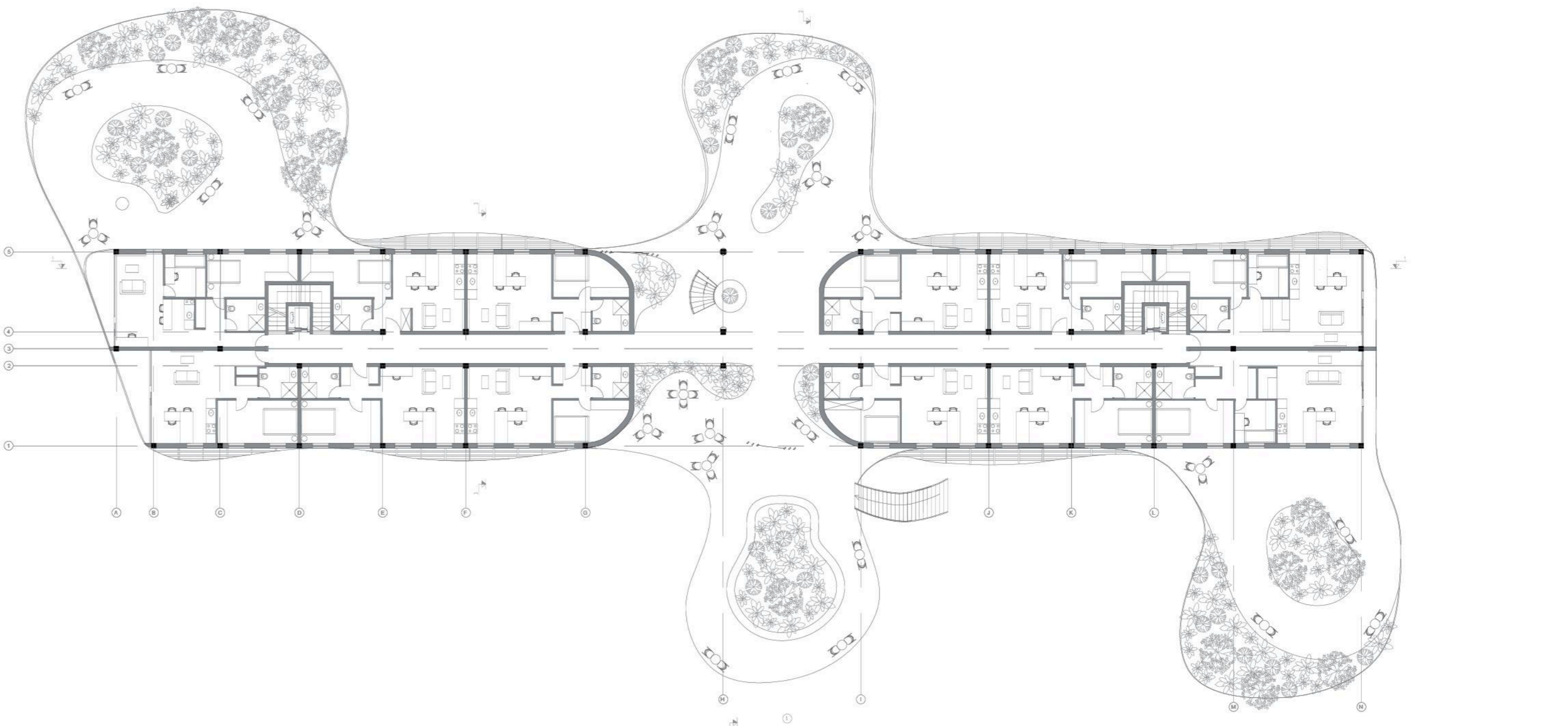
Passive Building Aspects	Standards Met?
Treated Floor area	6336m ²
Space Heating Demand	14967kWh
Heating Load	29762
Frequency of Overheating (>25°C)	6
Frequency of High Humidity (>75% RH)	6
Transmittance Ratio (0.05 kWh/m ² S.F.)	0.05
Non-renewable SE Demand	15985
PE Renewable Demand	6086



Palas Arites University
 The Film Academy
 Luis park
 LADS University
 FTIC University
 Railway Station
 Time out Market



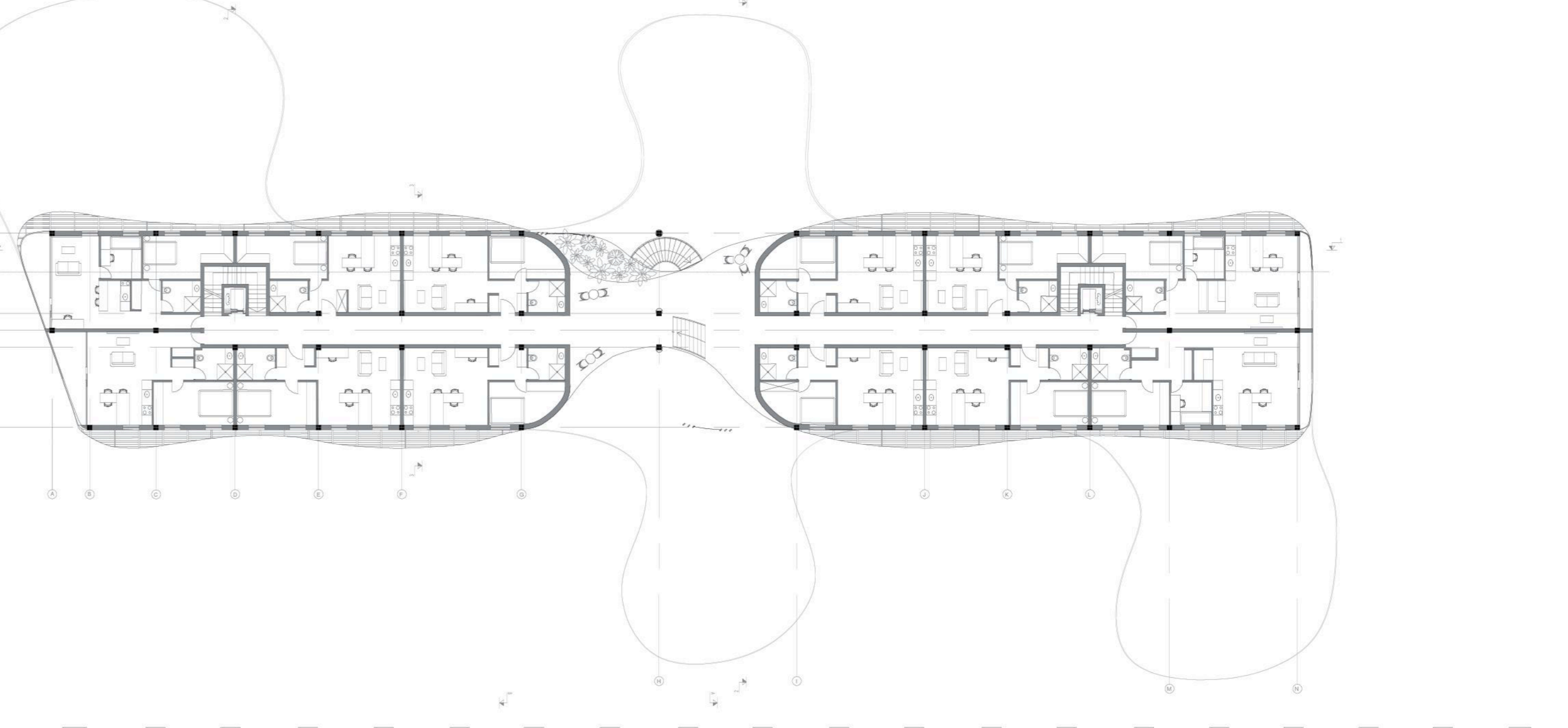
Section 2-2 1:250



2nd floor plan 1:250



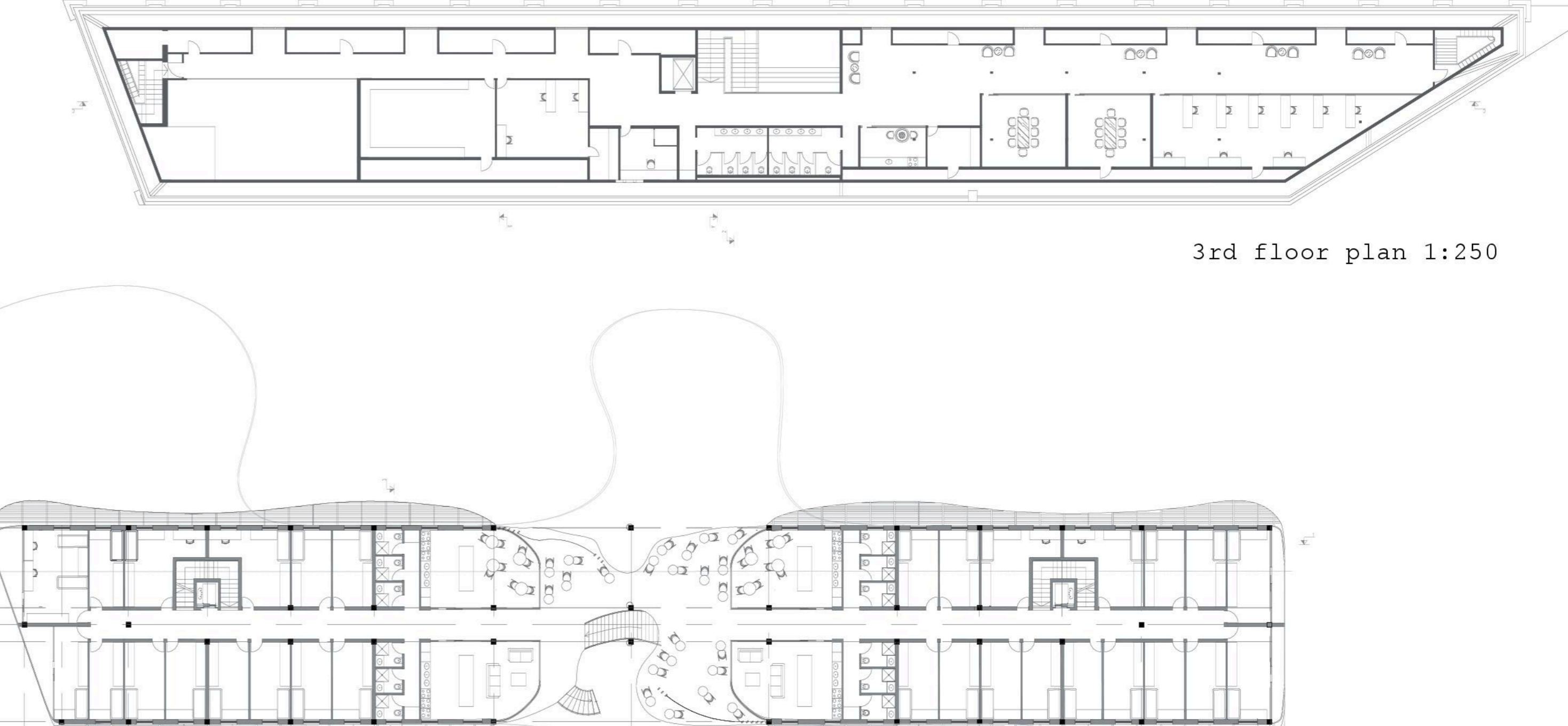
Section 1-1 1:250



3rd floor plan 1:250



North facade 1:250



4th floor plan 1:250



South facade 1:250



East facade 1:250



Mini botanical garden



Co-working space



Chill zone

