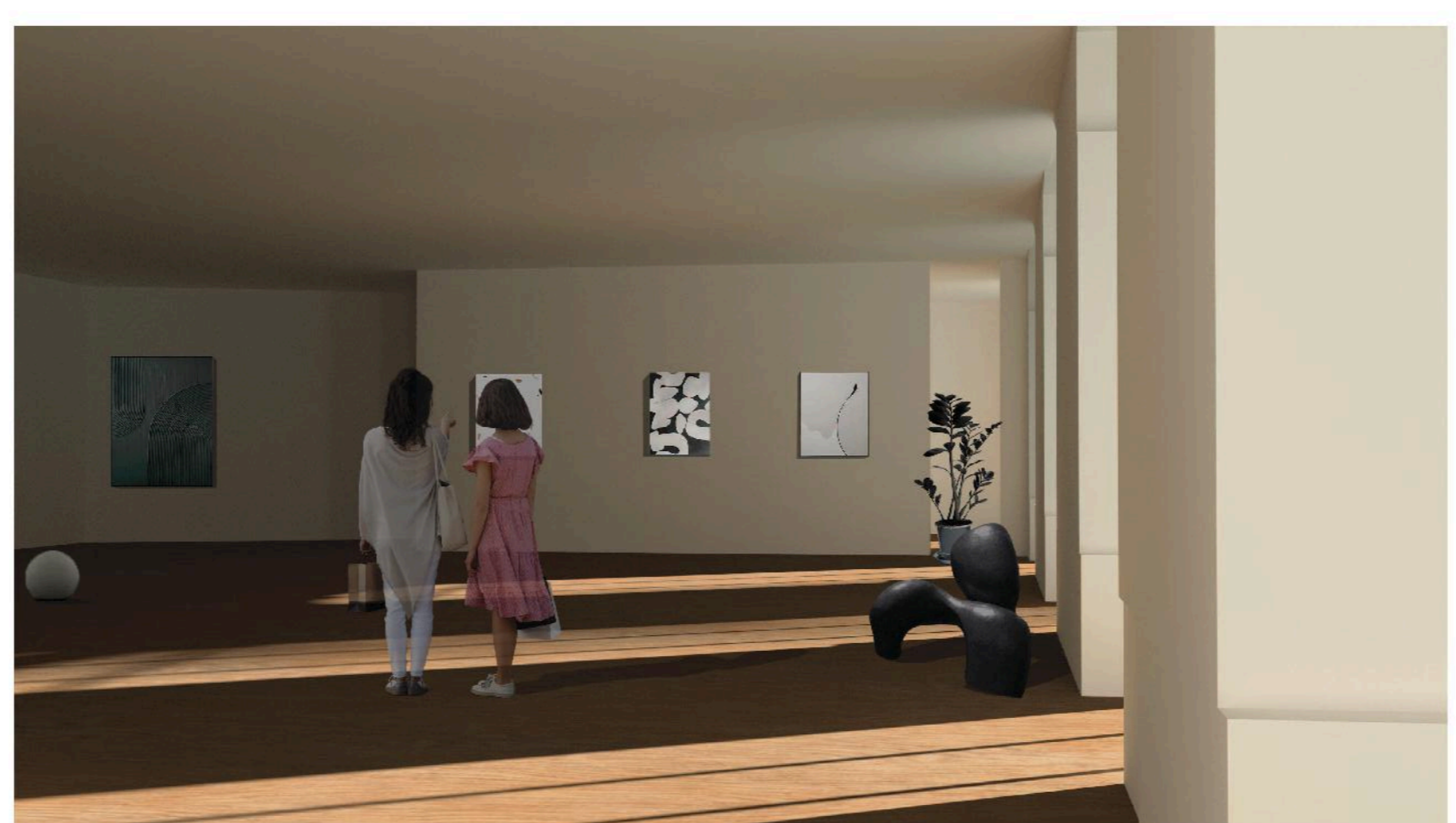
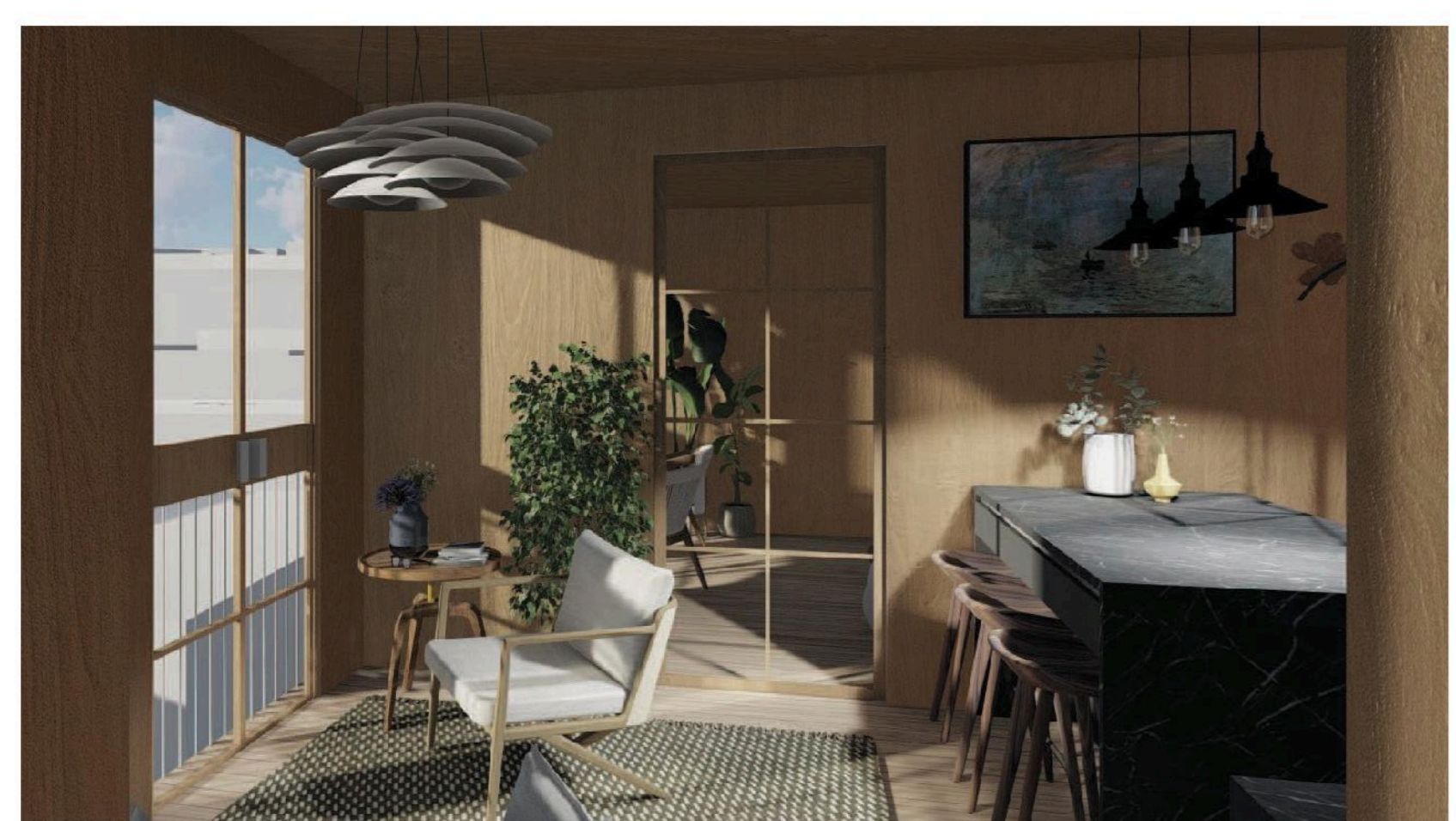


# The Frame

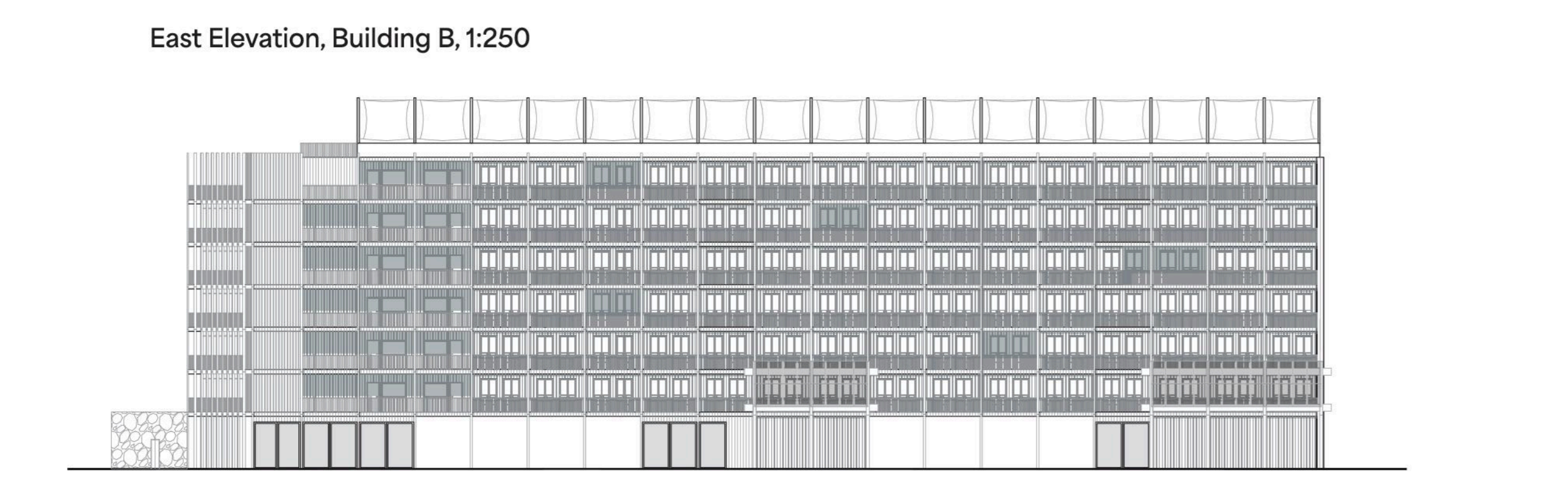
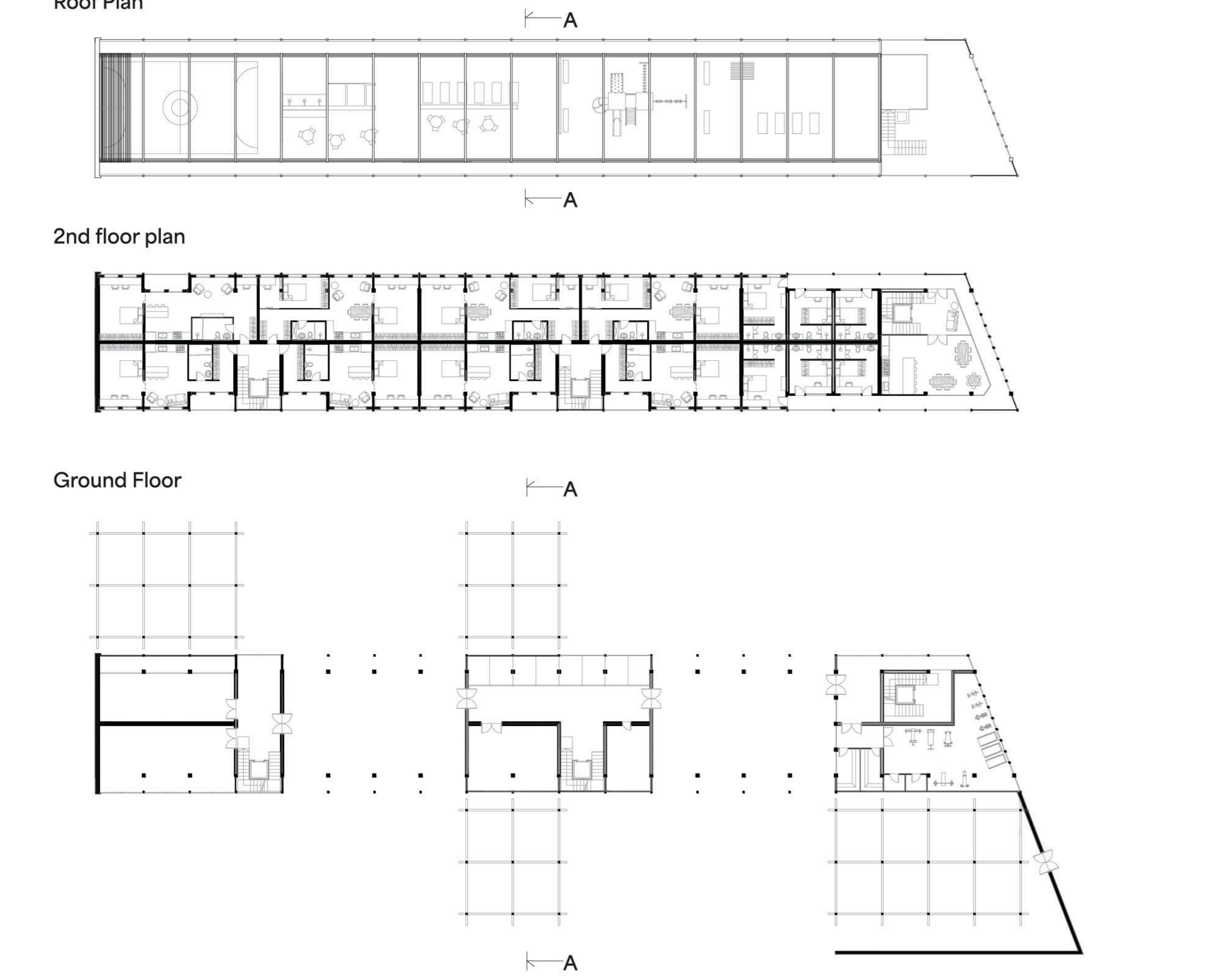
| General Information     |                             |
|-------------------------|-----------------------------|
| Number of Units         | 84                          |
| Occupancy               | 168                         |
| Floors                  | 7                           |
| Elevators               | 3                           |
| Winter Avg. Temperature | 20 °C                       |
| Summer Avg. Temperature | 25 °C                       |
| Address                 | Rua Dom Luís I, n10, Lisbon |
| Site Area               | 5500m <sup>2</sup>          |

| Team                   |  |
|------------------------|--|
| Elizabete Hanna Kaudze |  |
| Samanta Turovska       |  |
| Dávi Gimaraiss-Stikans |  |

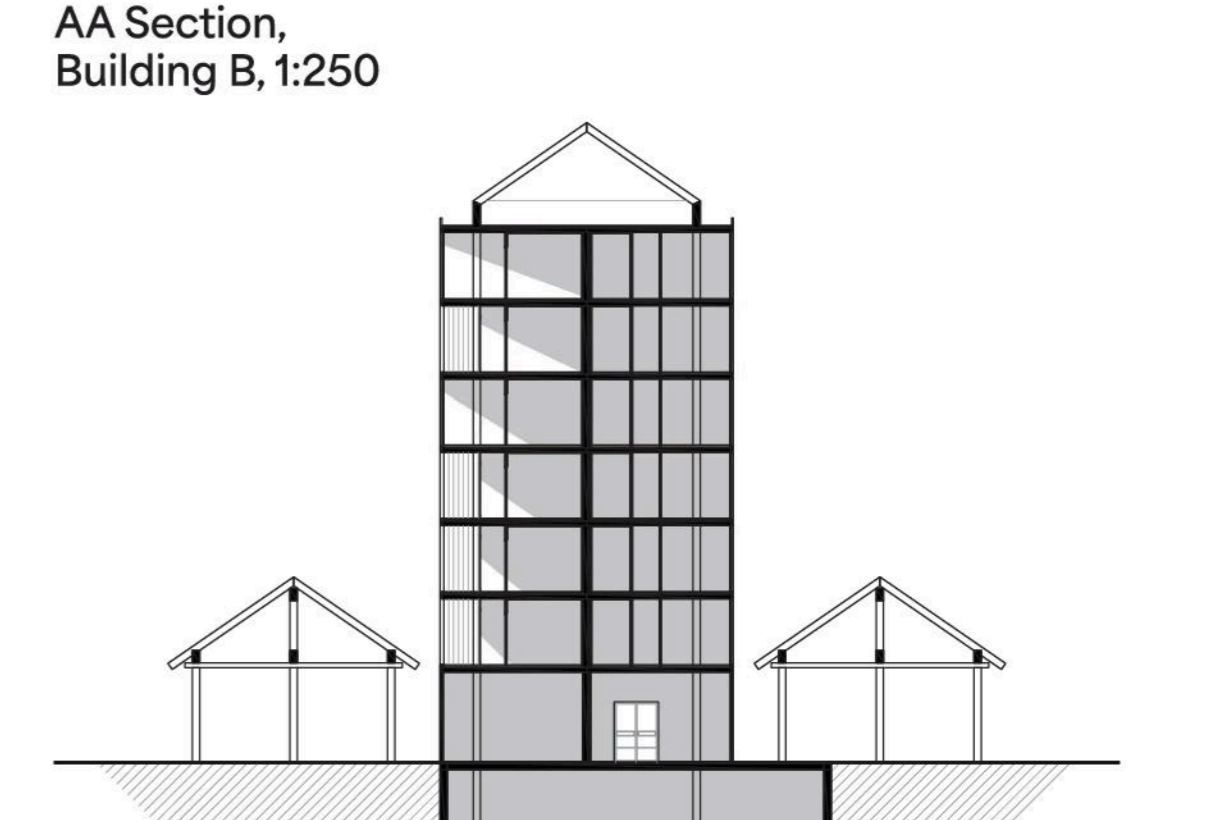
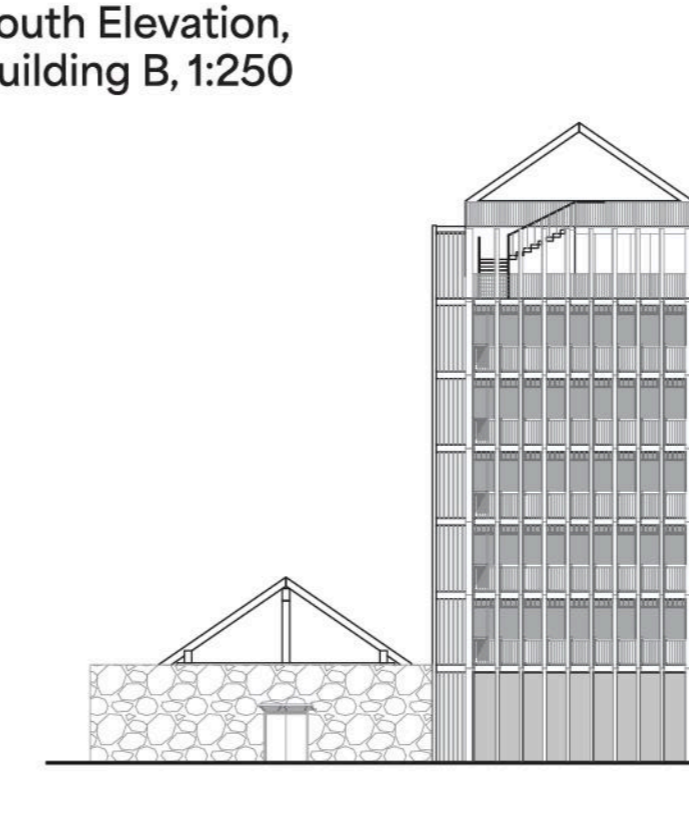
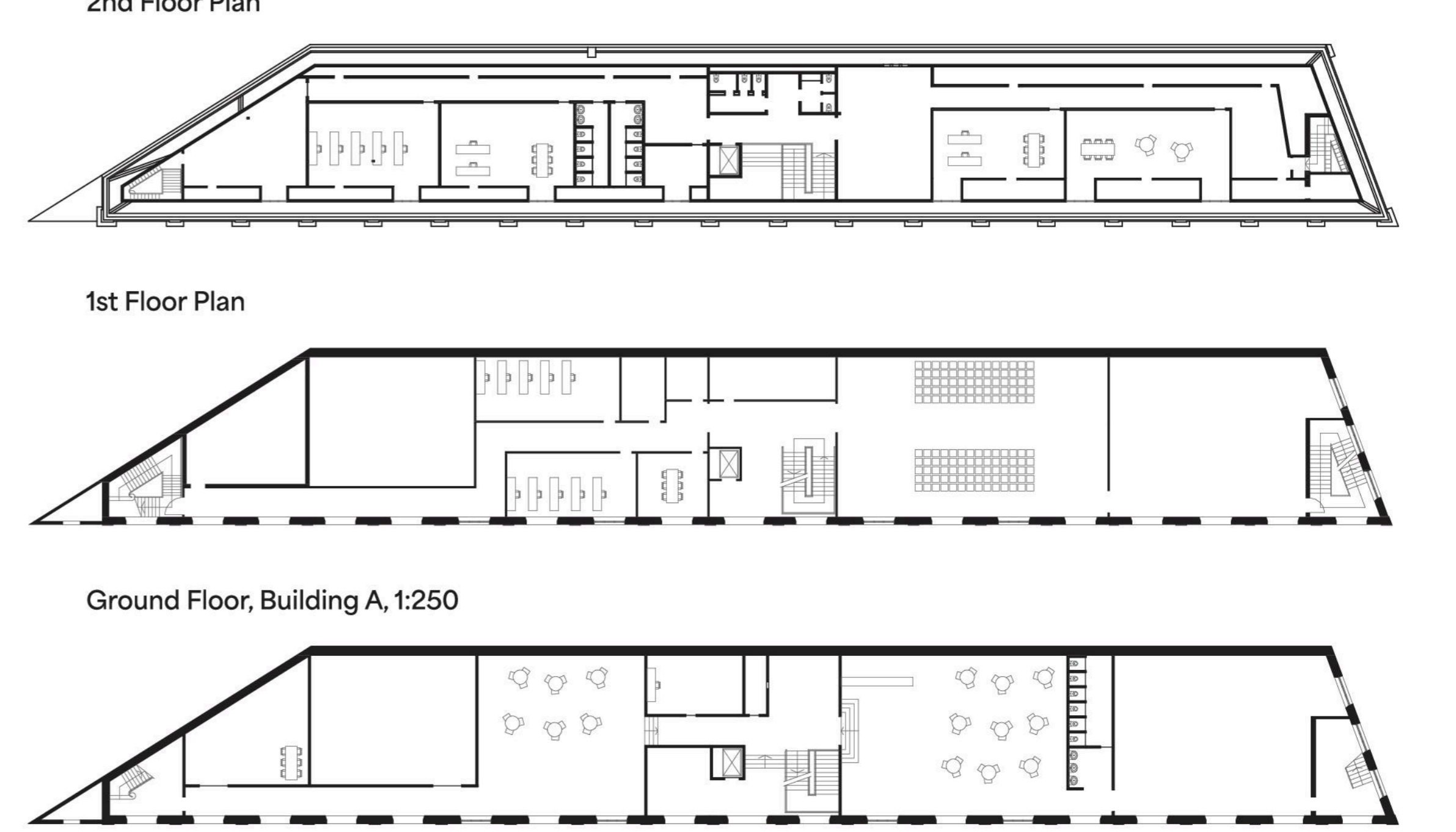


## Plans and drawings

Building B - 1:250



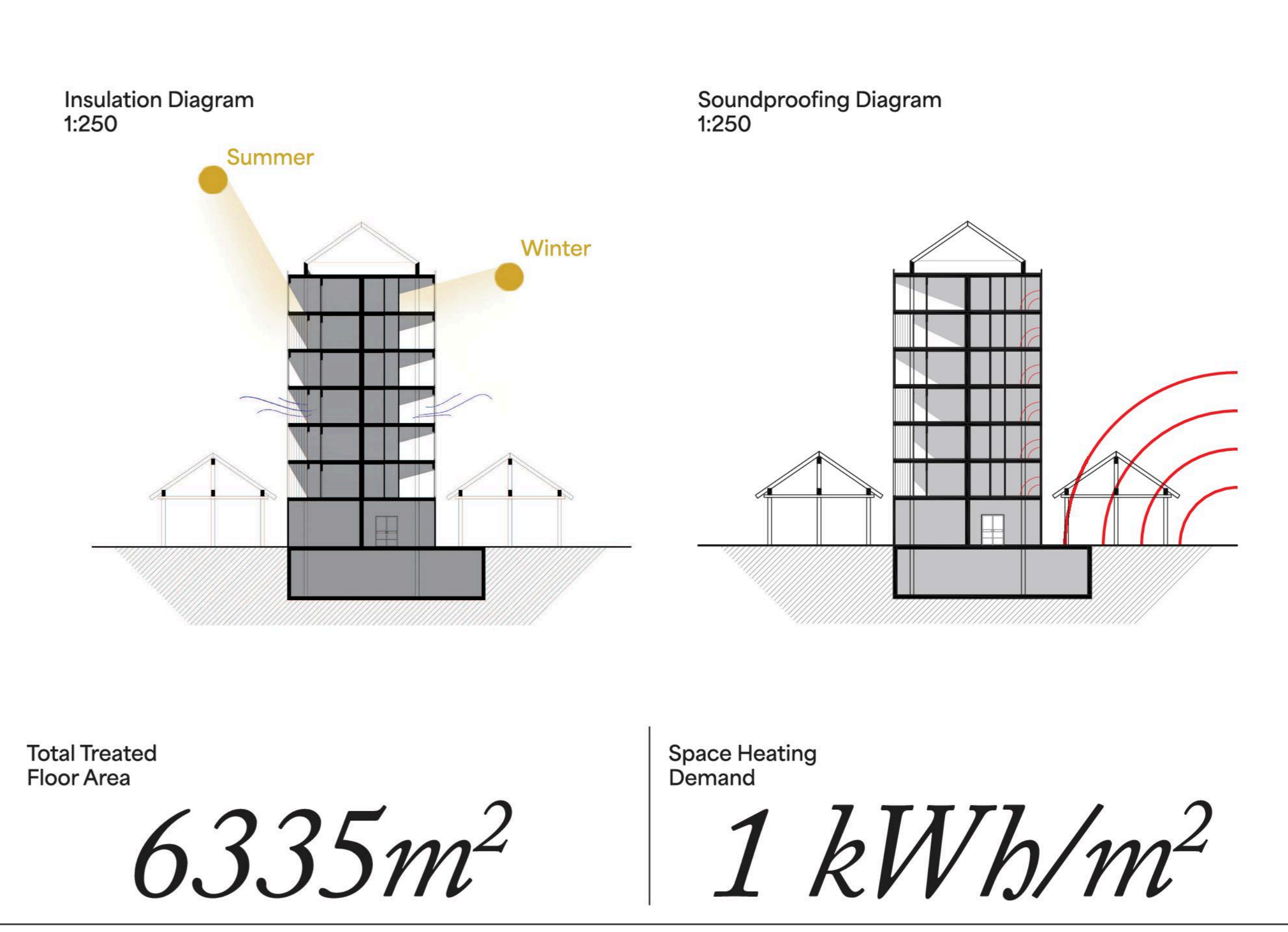
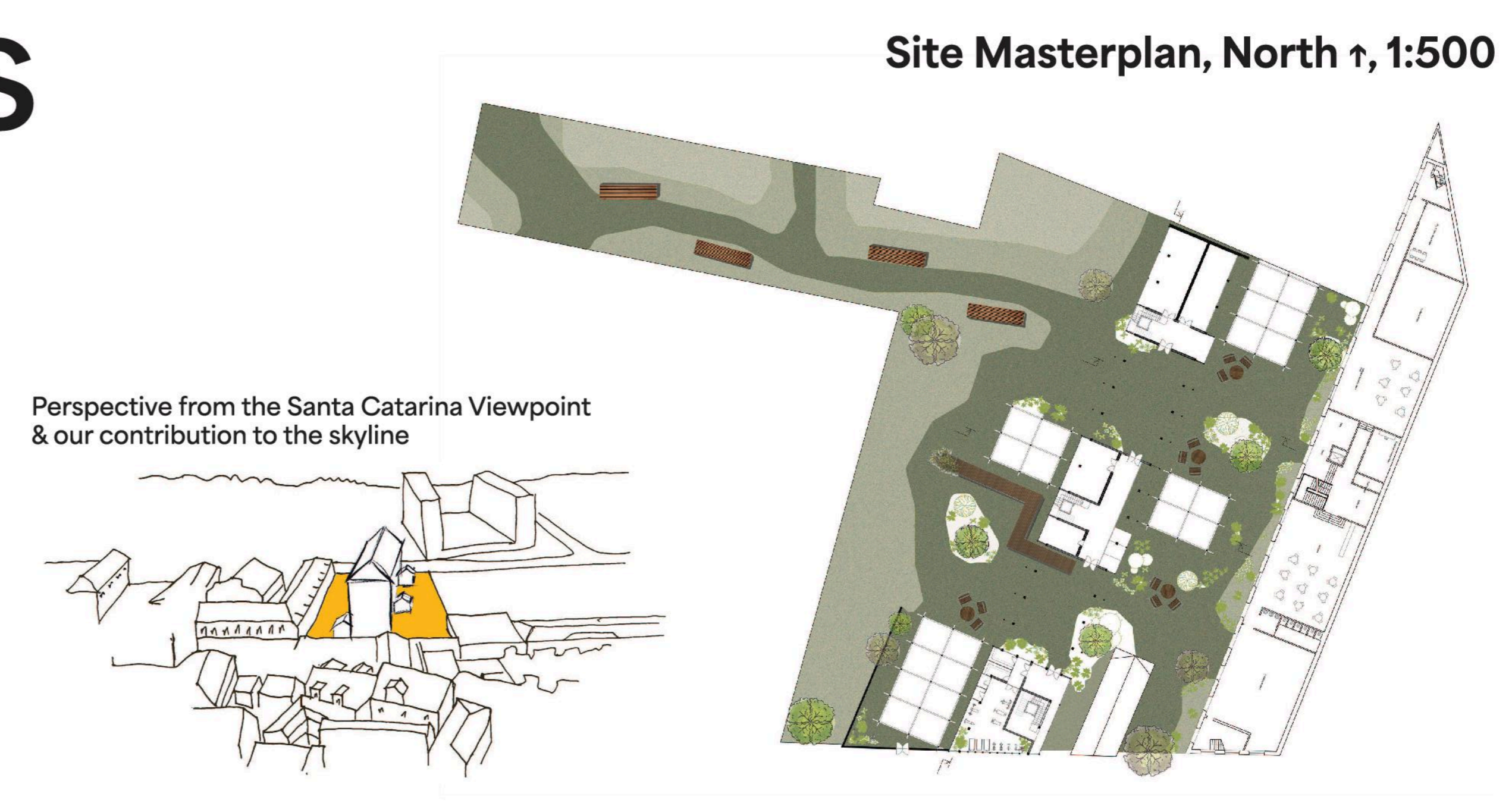
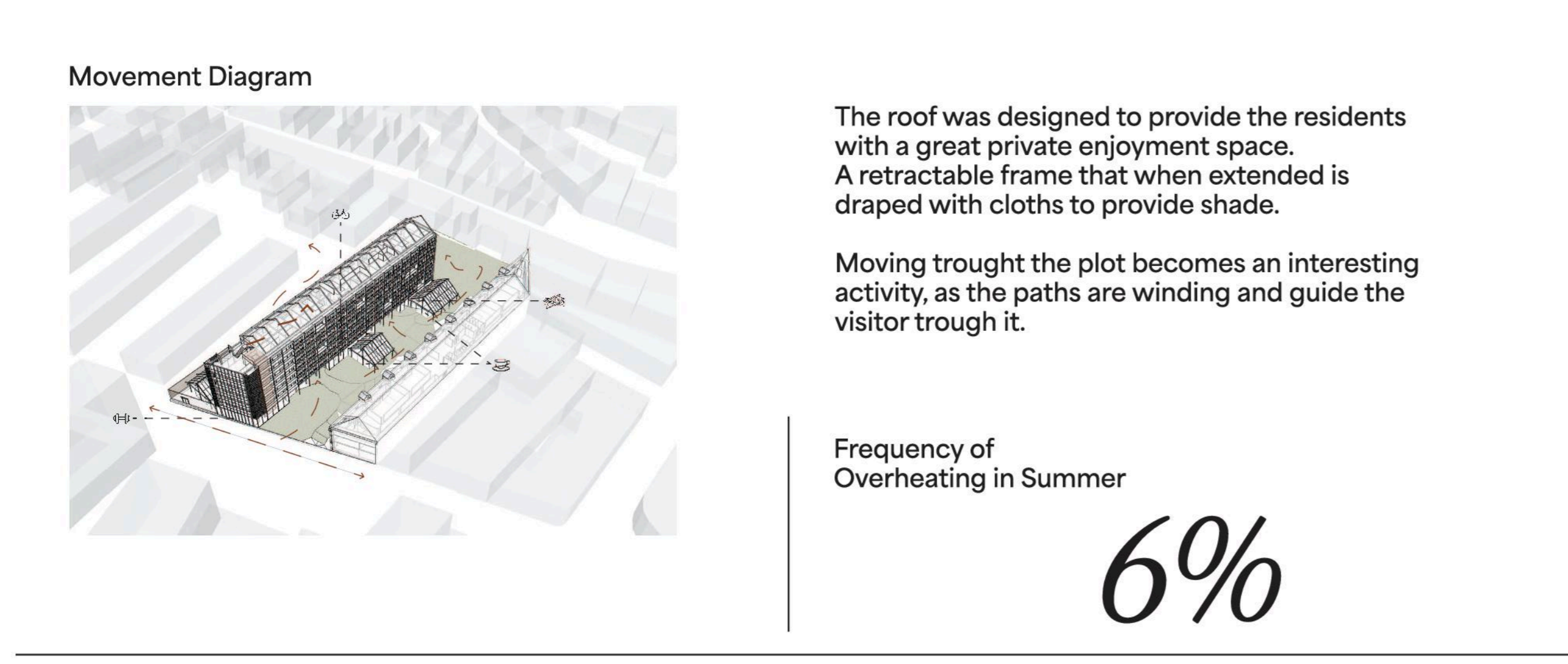
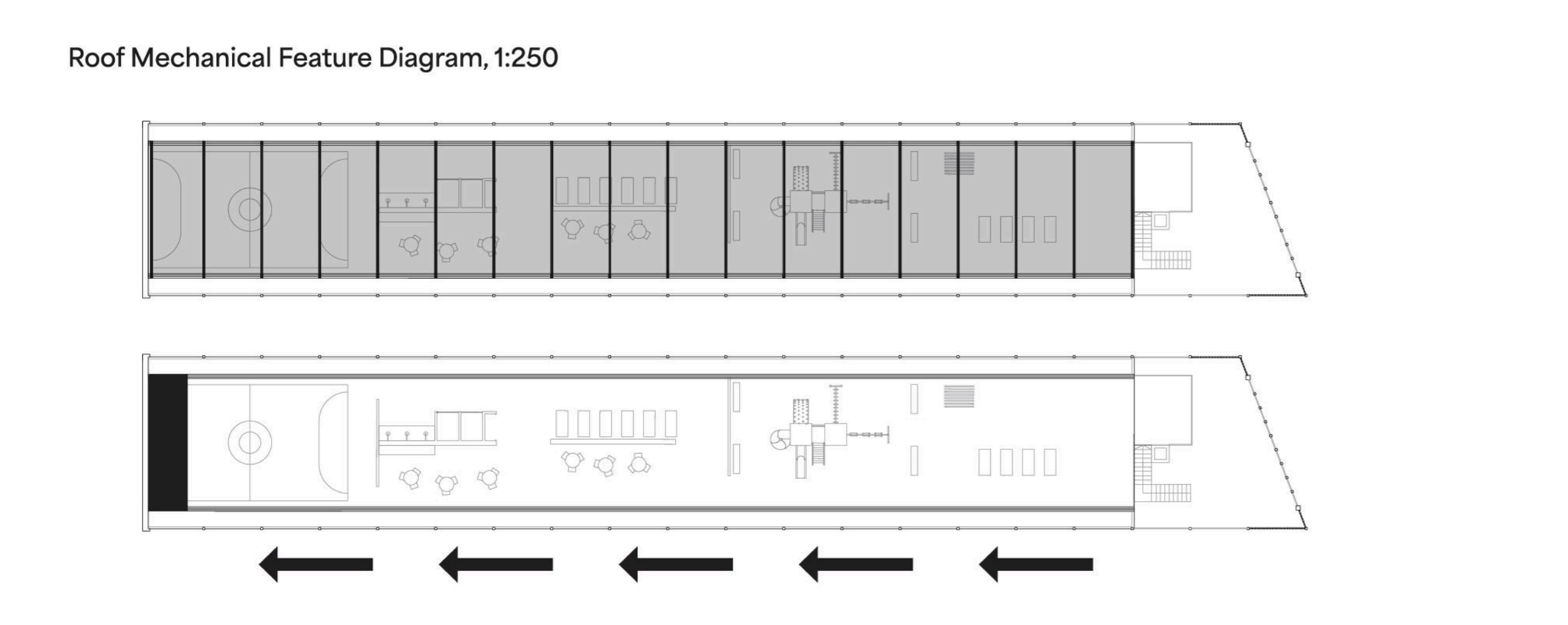
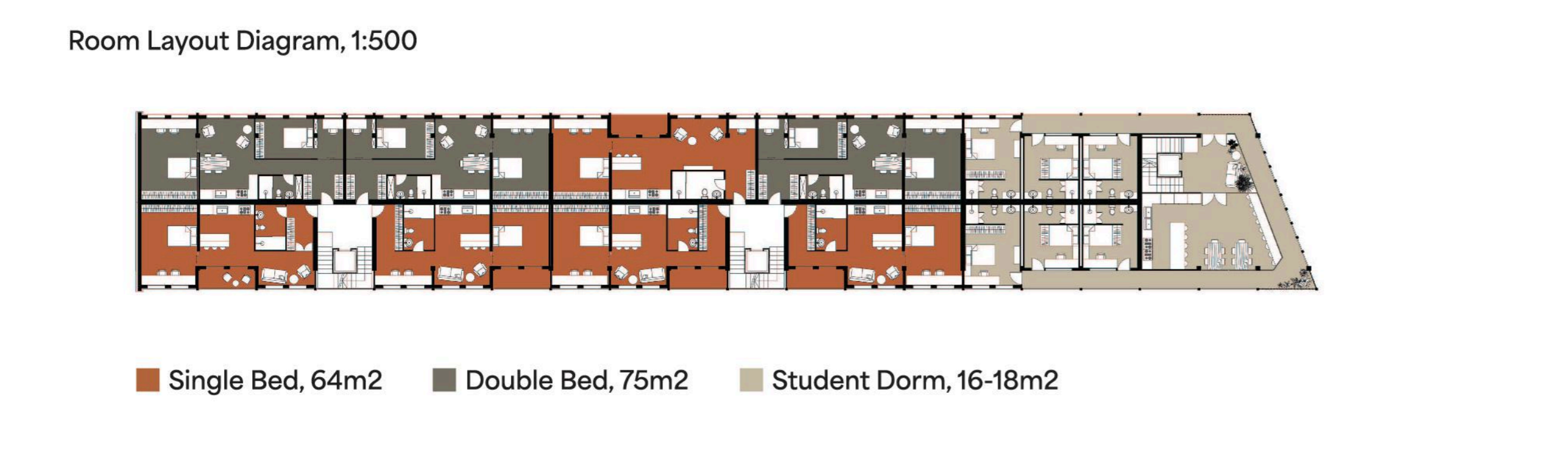
Building A - 1:250



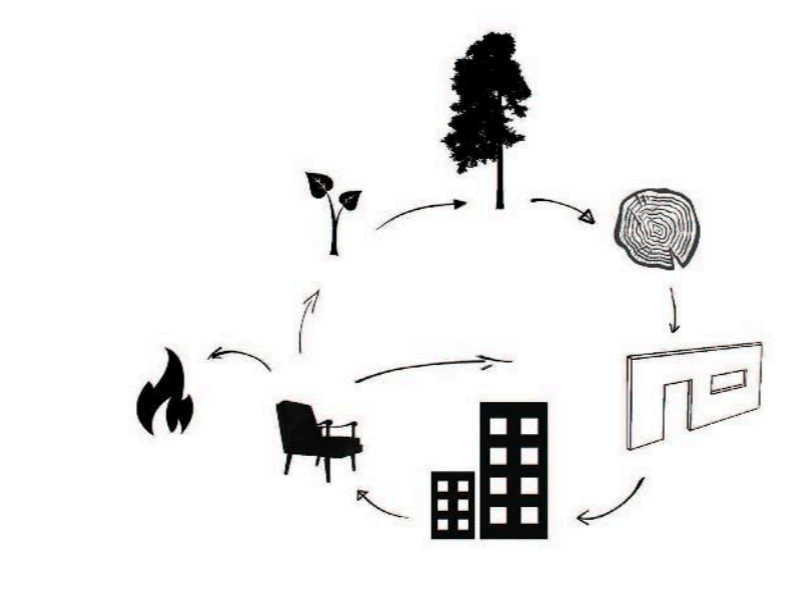
Variation in Unit Sizes  
**16-75m<sup>2</sup>**

Usable Rooftop Space  
**+661m<sup>2</sup>**

## Schematic Diagrams



## Structural CLT assembly



### Passive Building Aspects

| Passive Building Aspects                        | Standards Met?         |
|---|------------------------|
| Heating Load                                    | 2 W/m <sup>2</sup> yes |
| Frequency of High Humidity (12 g/Kg)% - 6%      | yes                    |
| Pressurization Result (n <sub>50</sub> 1/h) 0.6 | yes                    |
| Non-renewable PE Demand 15 kWh                  | yes                    |
| PE Renewable Demand 8 kWh                       | yes                    |

