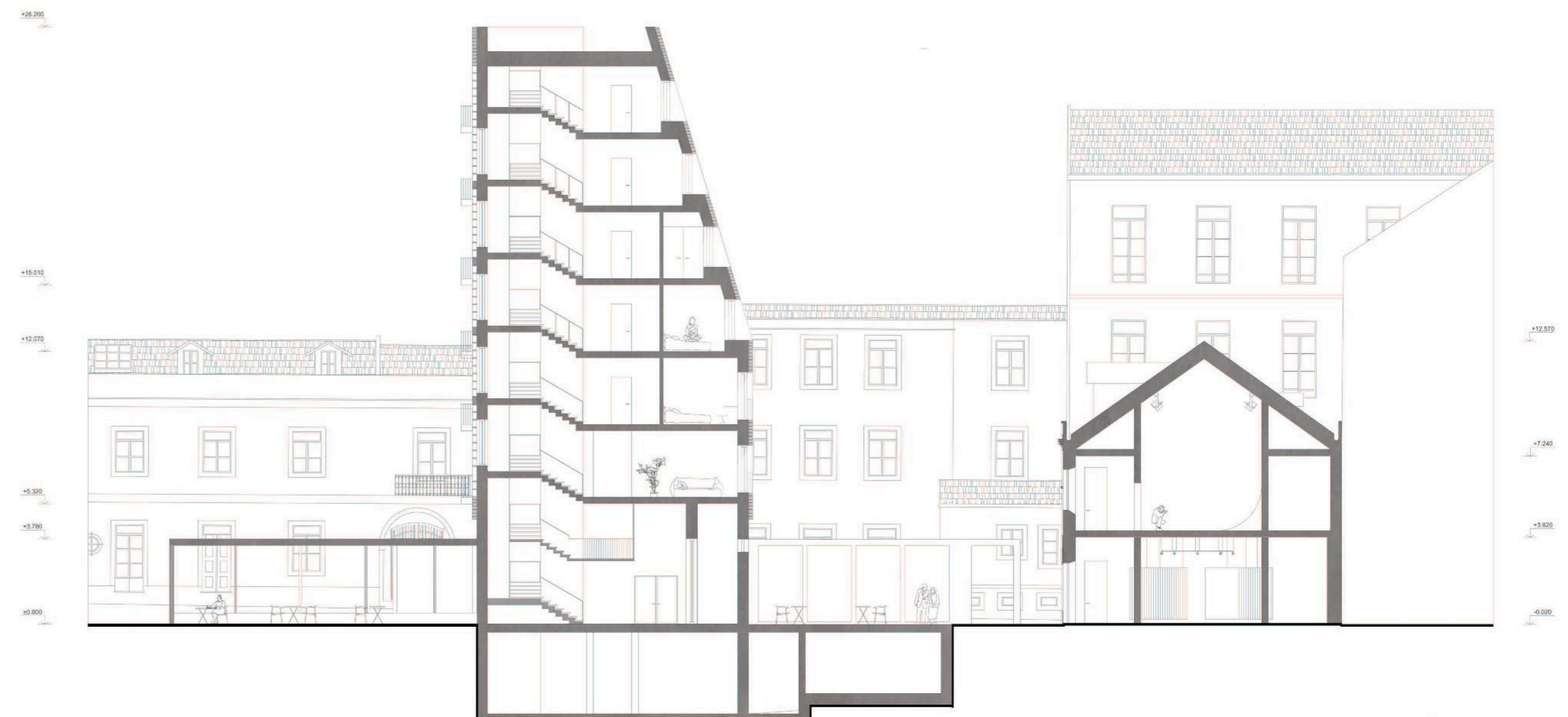
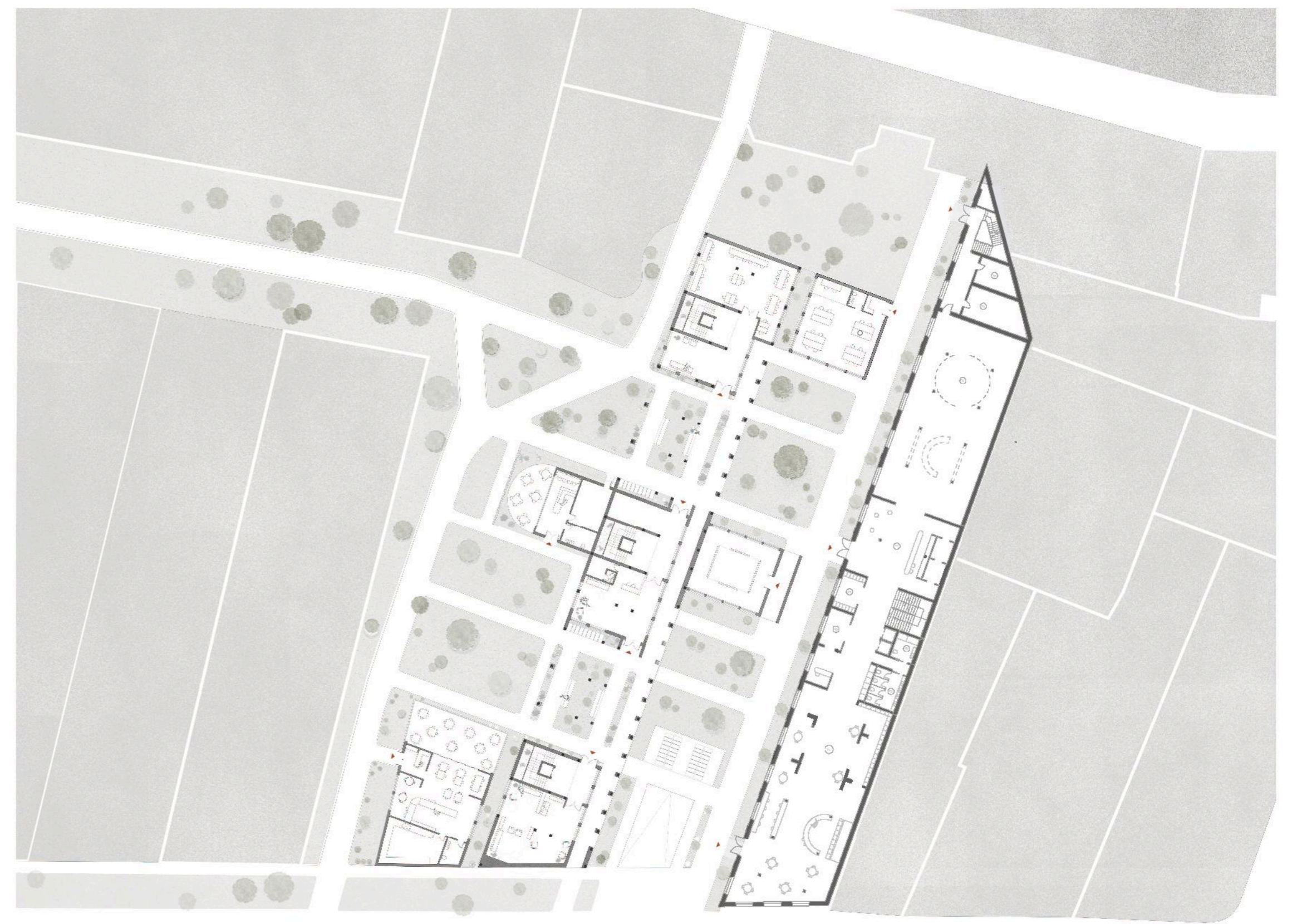
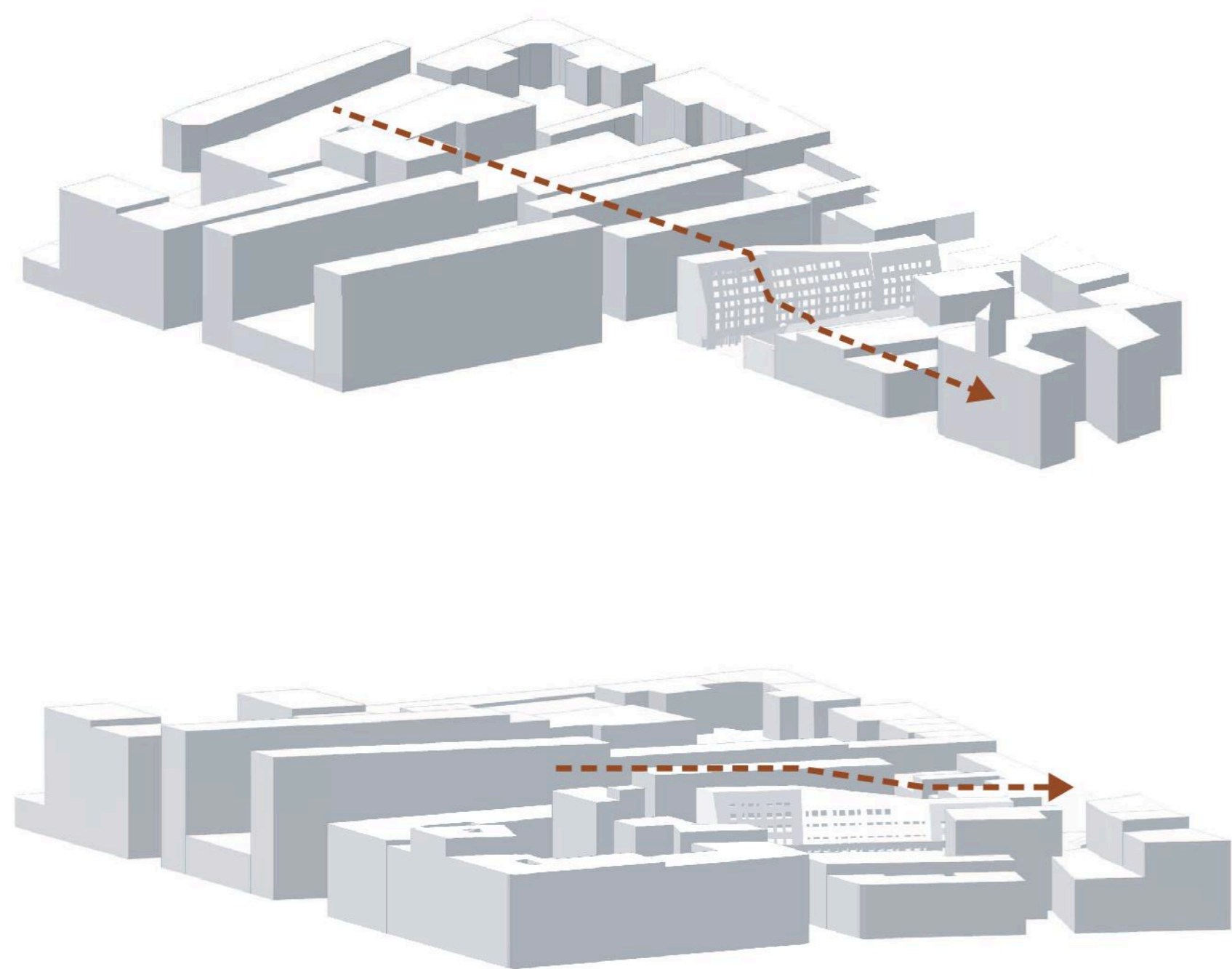
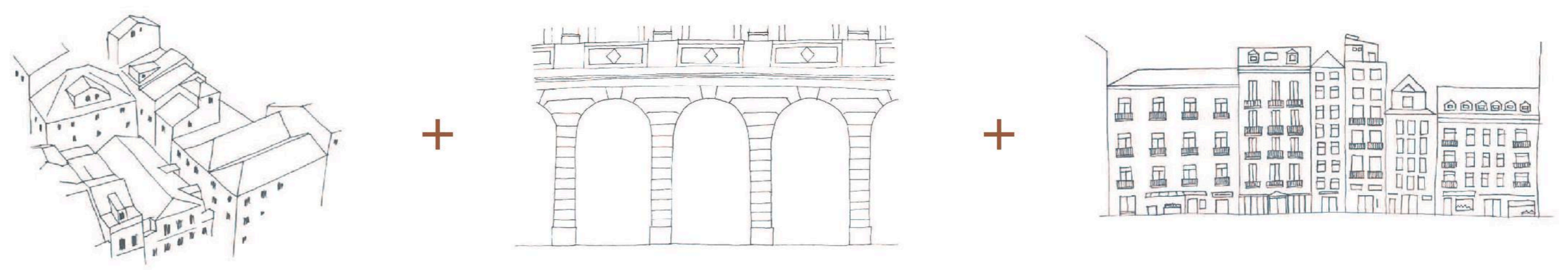


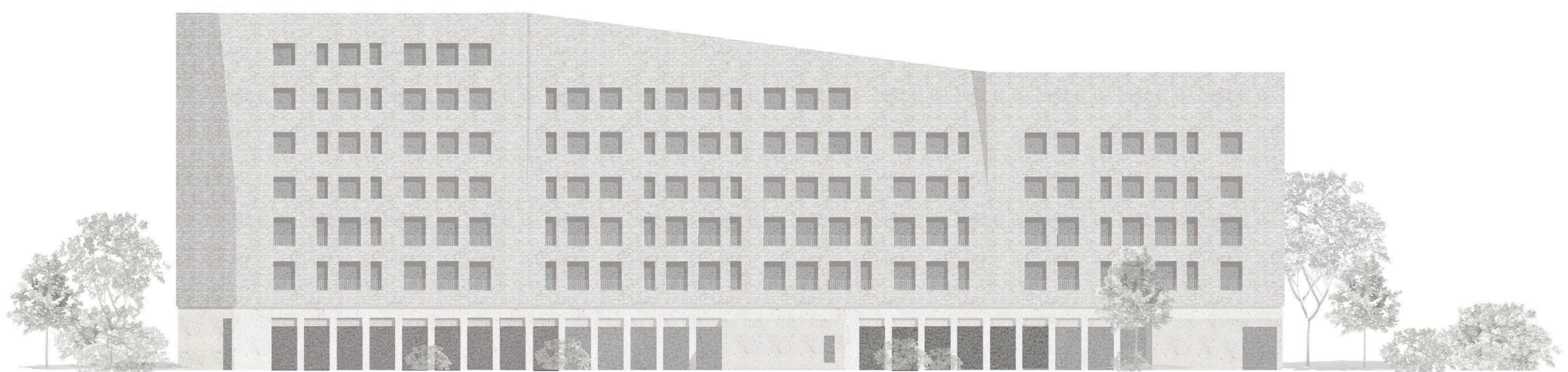
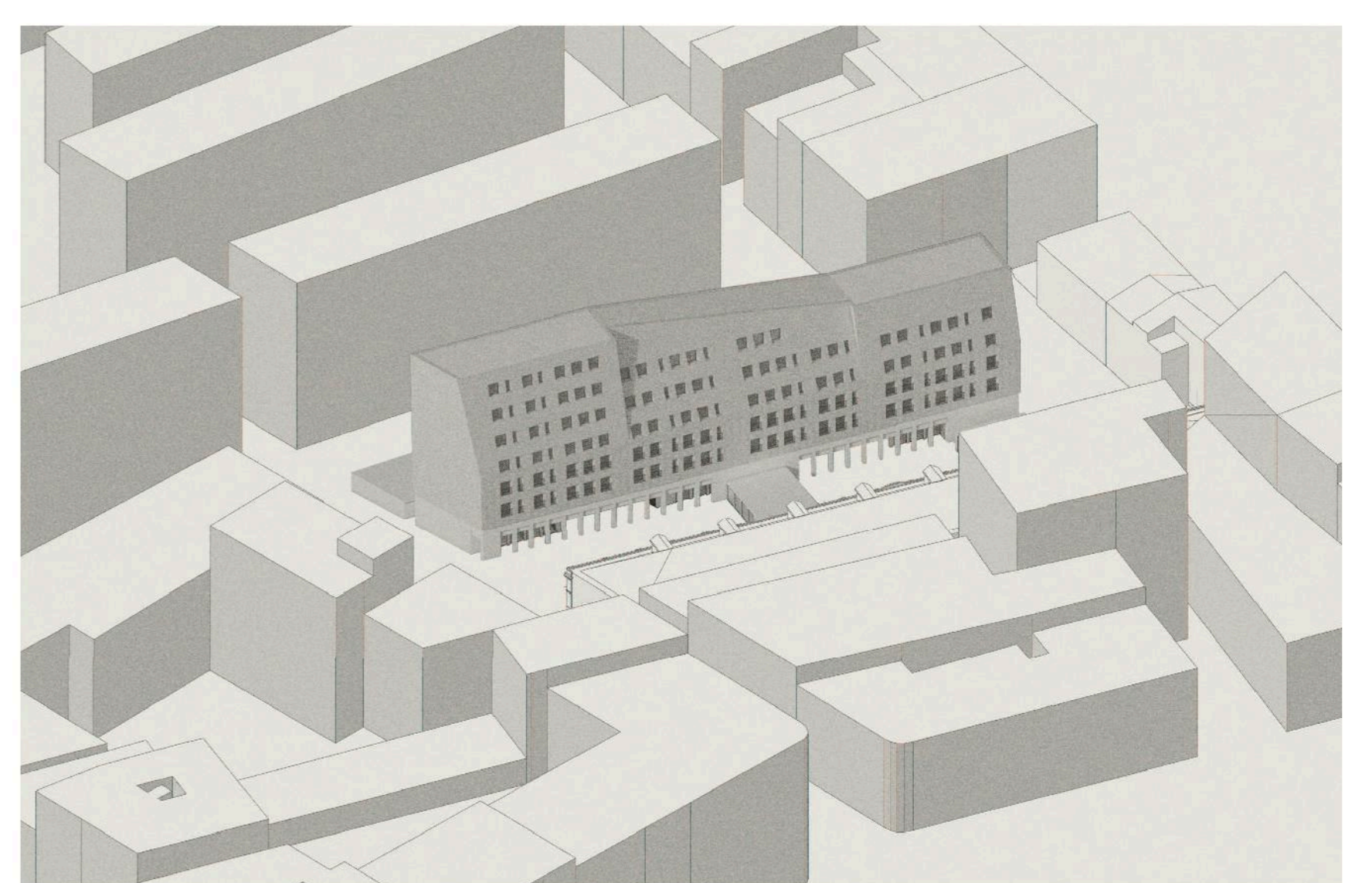
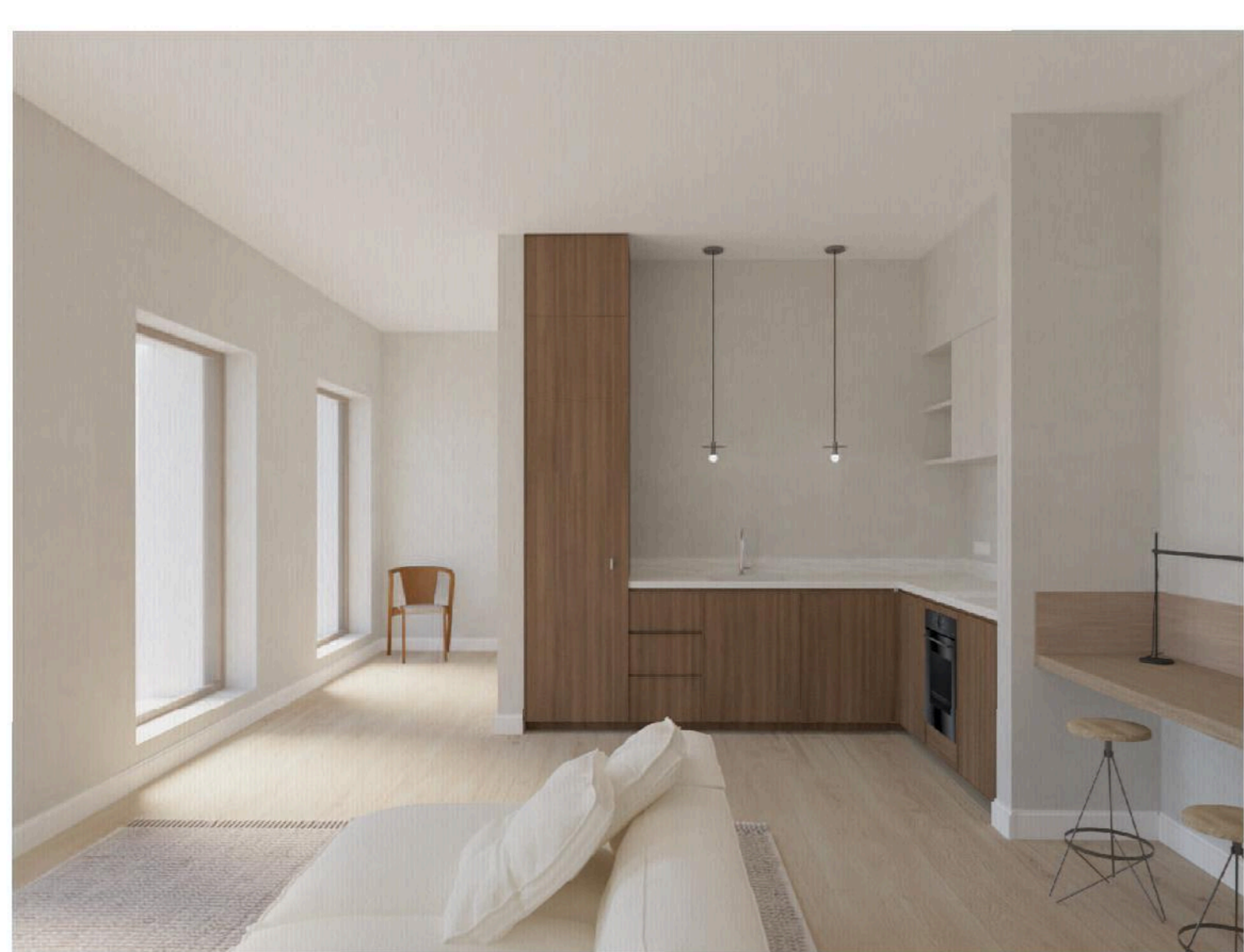


Lisbon is the capital as well as the largest city of Portugal. The city center sits between seven hills and the unusual landscape provides for narrow and steep streets winding up and down across the different districts. The site is located in the Boavista Landfill - an urban area west of the center, near the river bank. The long and narrow plot that once reflected the distant, industrialized landfill becomes a new urban public space with the residential building and new Lisbon video library. The industrial part of the area differs from the historic residential typologies in volume and scale. The new residential building serves as a mediator between these scales by imitating the sloping roofs of the traditional buildings to the east. The volume of the residential building and the landscape become connectors between the streets from all sides of the plot by welcoming, guiding, and accommodating the visitor.

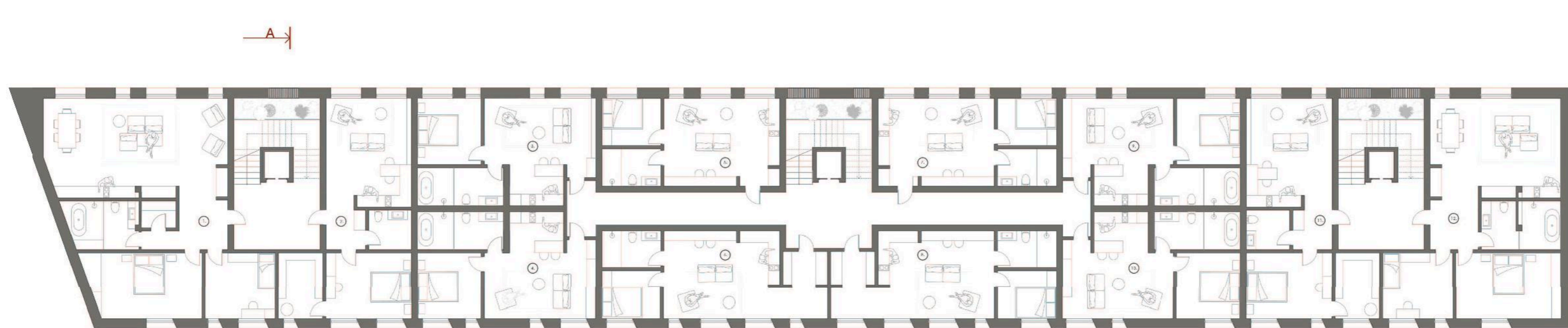


MASTER PLAN
SCALE 1:500

SECTION A-A
SCALE 1:200



EAST ELEVATION
SCALE 1:200



FIRST FLOOR PLAN
SCALE 1:200

