

RIVERSIDE RECONNECTED

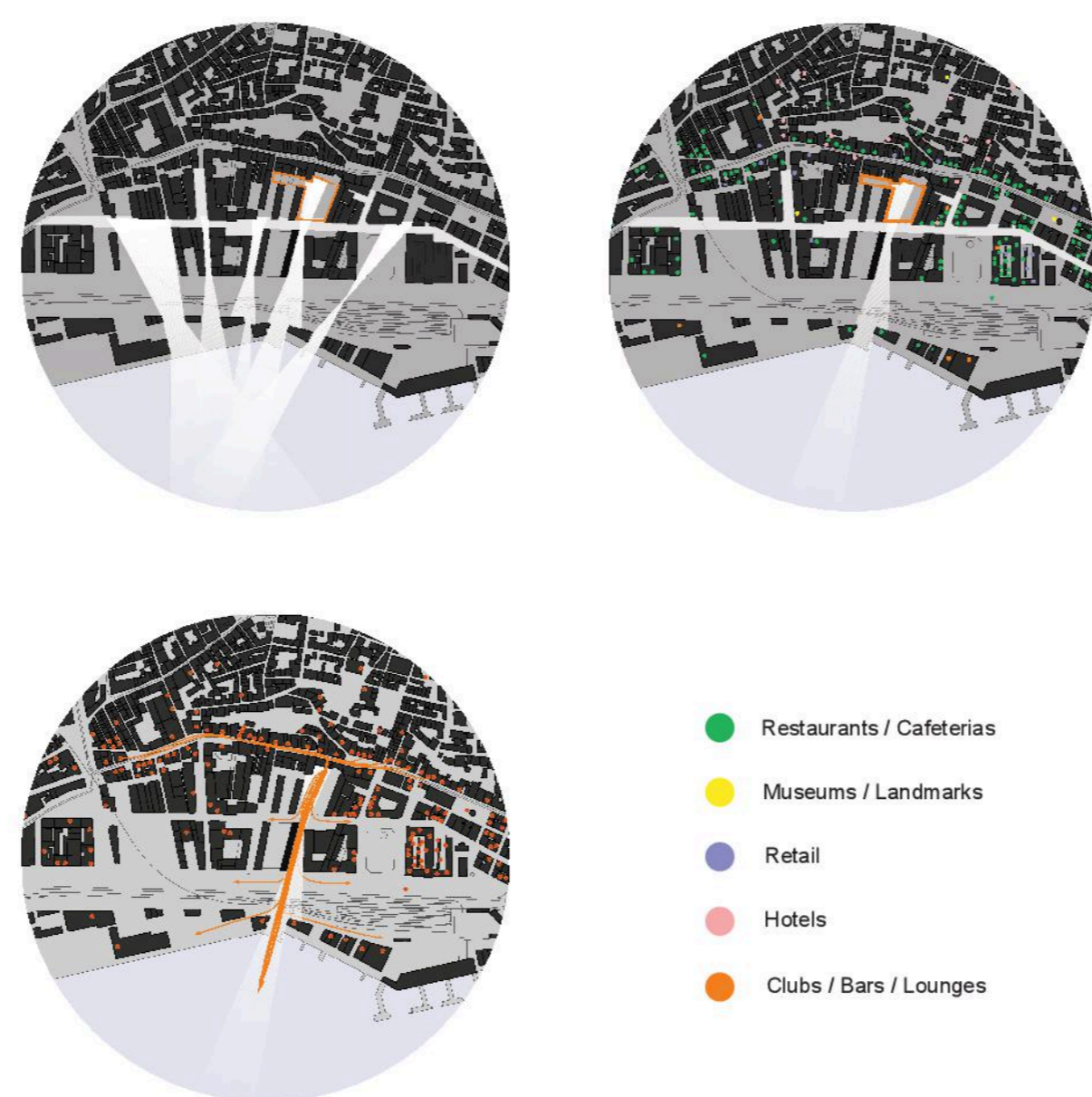
Restoring Connection Between City and Riverfront

FAD
JĀNIS RAPA,
MATISS KLĀVA,
MARKUSS BRIEZE

SITE ANALYSIS



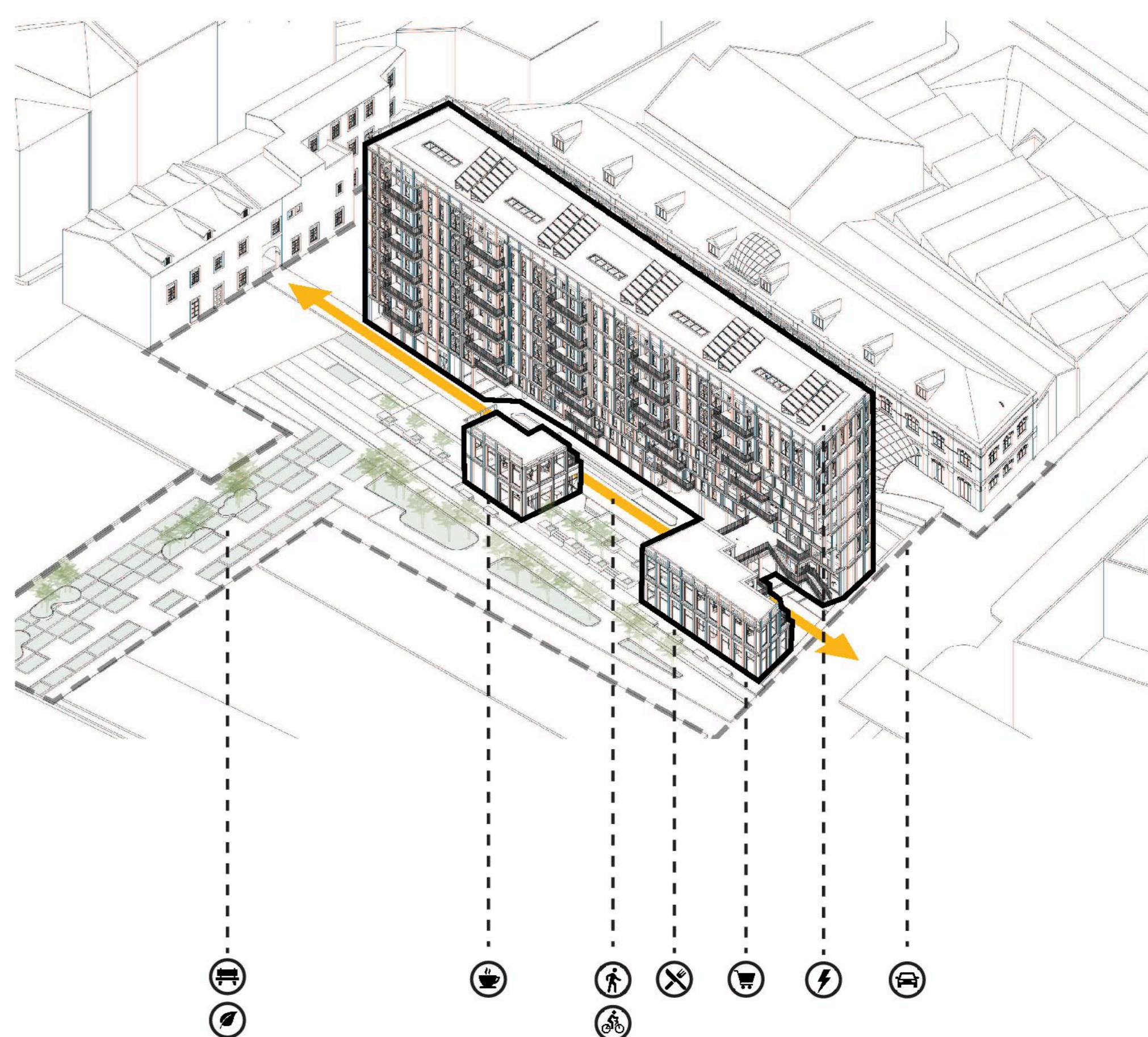
Boavista area housed early industries, with unplanned narrow plots maintaining contact with the river. A middle street divided the plots.



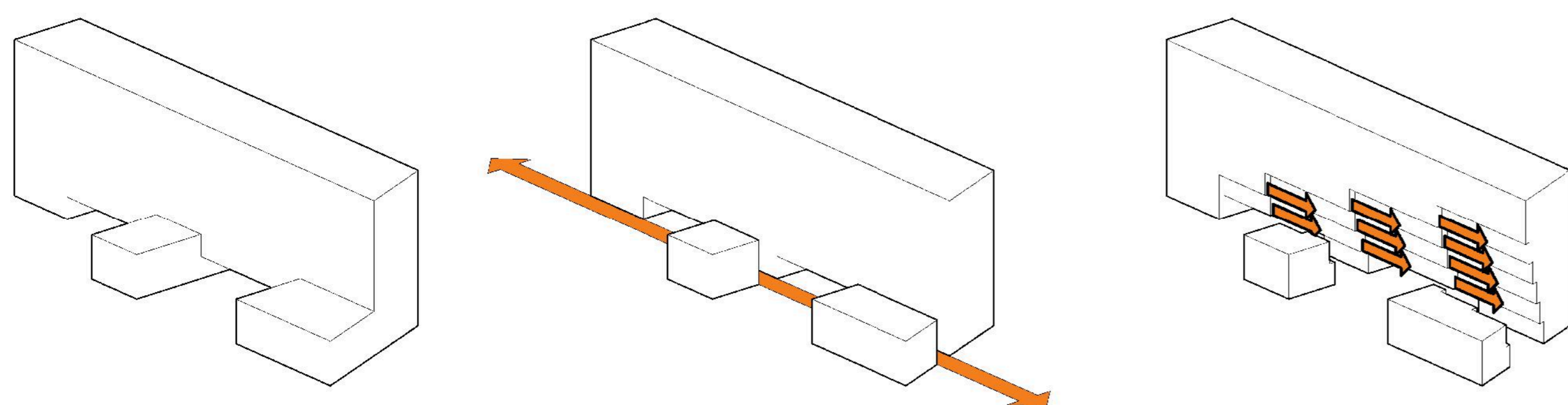
New projects adapt to historical typology and maintain visual connection to riverfront, crossing Avenue 24 de Juhlo.



AXONOMETRIC VIEW

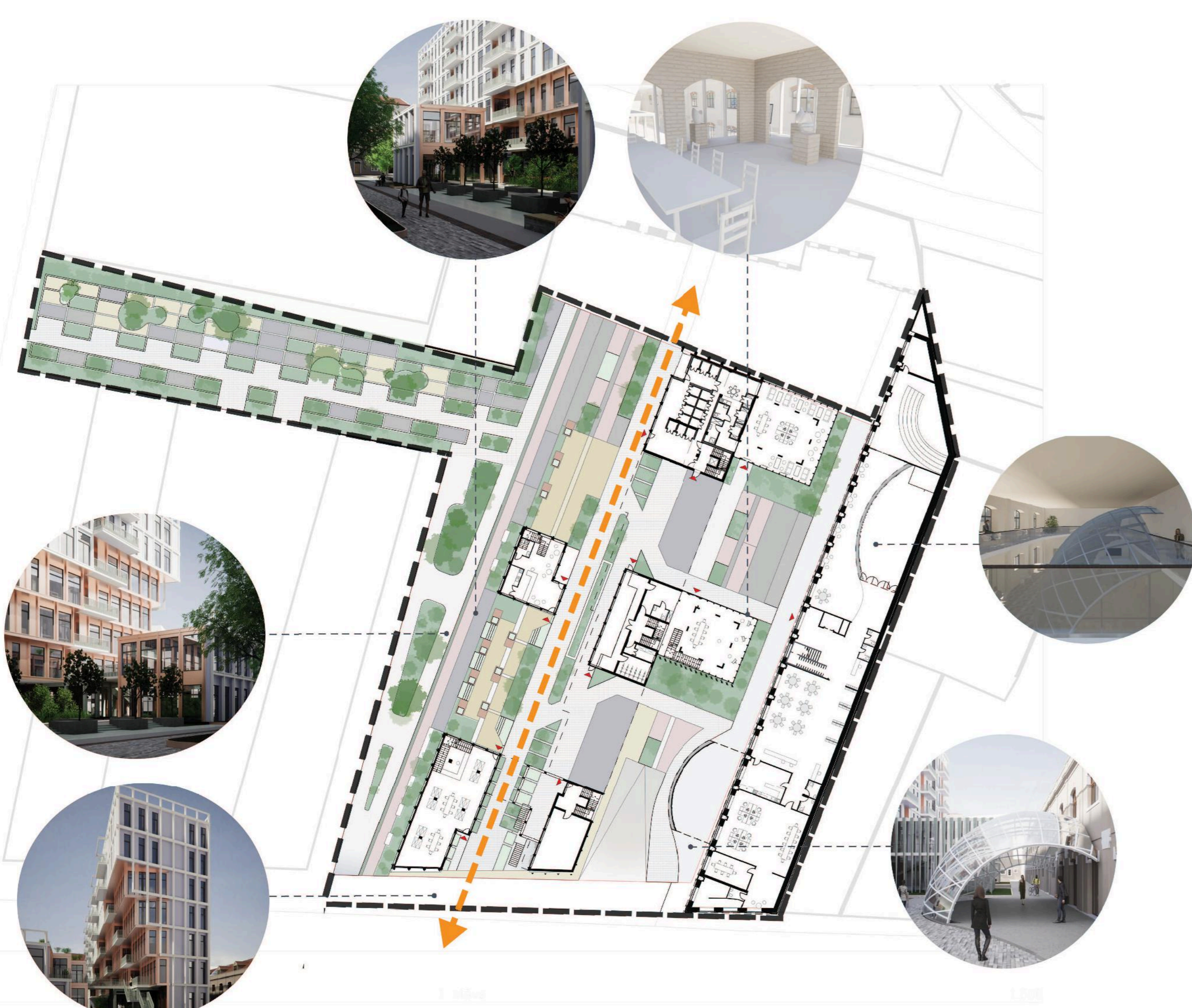


CONCEPTUAL SCHEME



Building A aims to connect Rua Dom Luis I and Rua da Boavista via a street-like passage. It features separated volumes and a step-like form for dimension and views.

MASTERPLAN 1 : 500



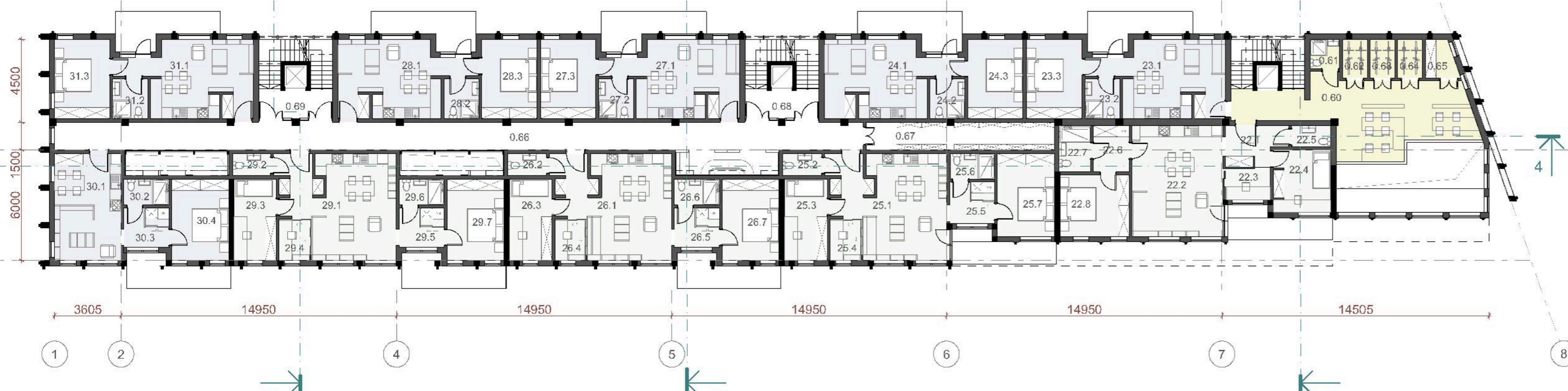
FLOOR PLANS 1 : 200



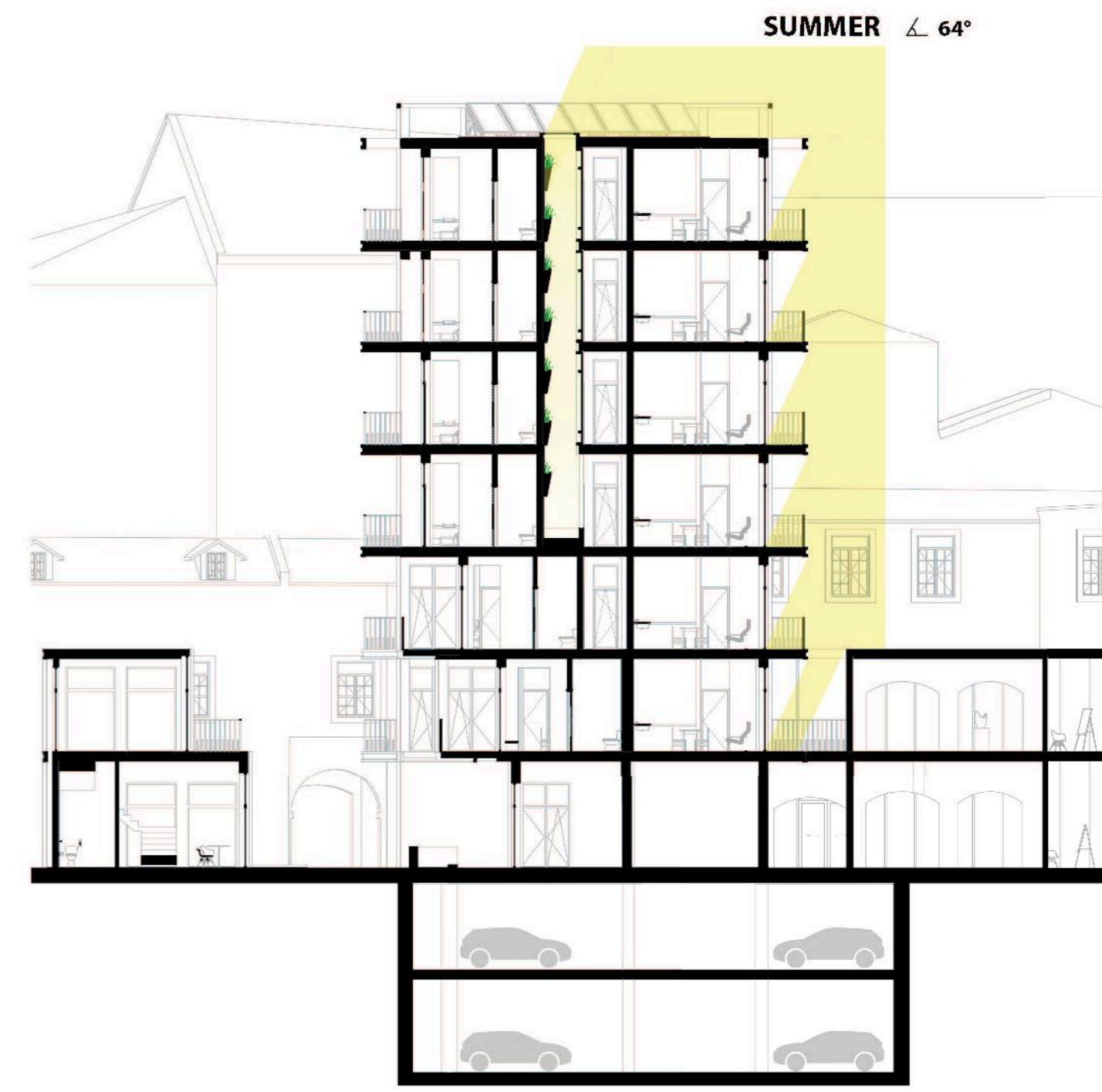
1ST FLOOR



4TH FLOOR



SUN DIAGRAMS



SOUTH FACADE

