

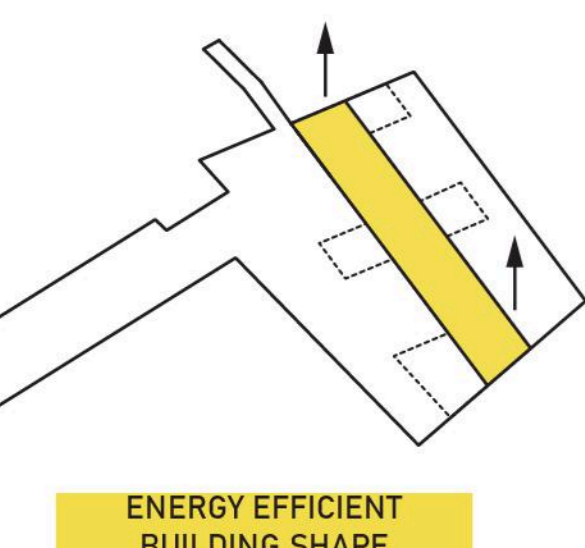
BARCO BRANCO

TRANSLATION: THE WHITE BOAT

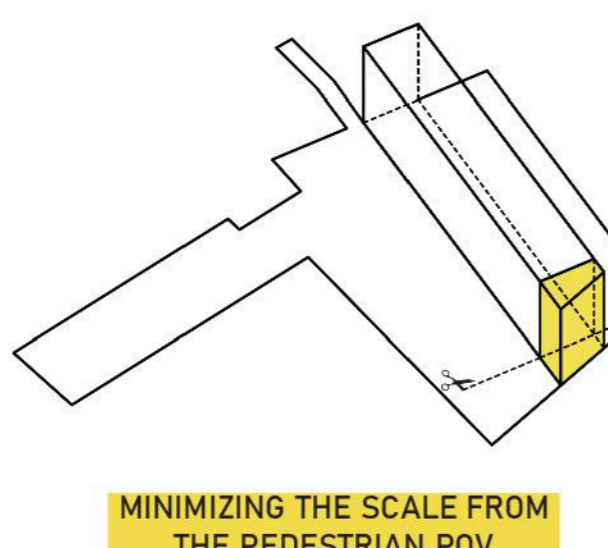
Firstly, the Portuguese are known to be sailors for the longest time, conquering the sea and even now they are in the process of expanding their own sea territory. Therefore, boats directly are and will continue to be their symbol of power. Moreover, the boat has become an important symbol and expression of the region's popular culture, despite the fact that today it no longer possesses the economic and social role that it once enjoyed, having become primarily an object of commodification by the tourist industries. Lisbon happens to be situated on the widest stretch of the Tagus River, which acts like a big mirror, which makes it appear white.

Secondly, Portuguese deeply value their culture, and folk beliefs play a huge part in their day-to-day life, which coordinates with many different symbols that represent that, lavender fields being one of them. In the folk tales the paths surrounded by lavender fields are often called the roads of life.

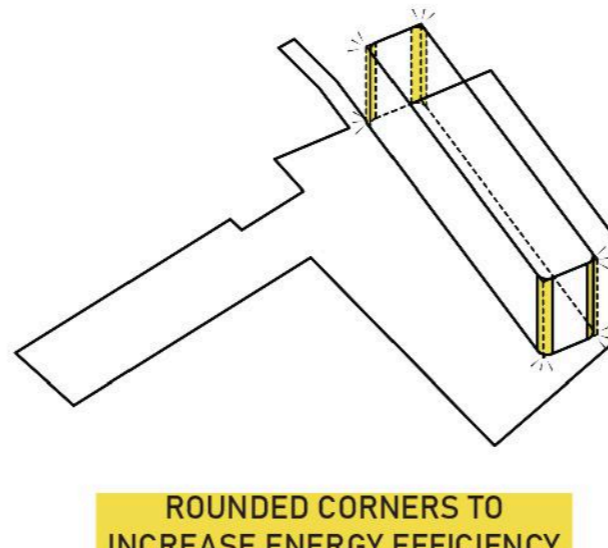
There is a direct correlation between these two symbols. Whilst the building itself - The White Boat or Barco Branco is a powerhouse of sustainable energy, the site plan, which is a direct representation of the biggest lavender field in Portugal, is what gives Barco Branco its vitality, longevity, acting both as the tool that enhances the interior climate and an entertainment ground for its inhabitants in day-to-day life. Interestingly enough, traditionally lavender was used to dispel boat odors, for cleaning purposes, and most importantly, to extend the shelf life of food, thus, allowing the sailors to prolong their trips.



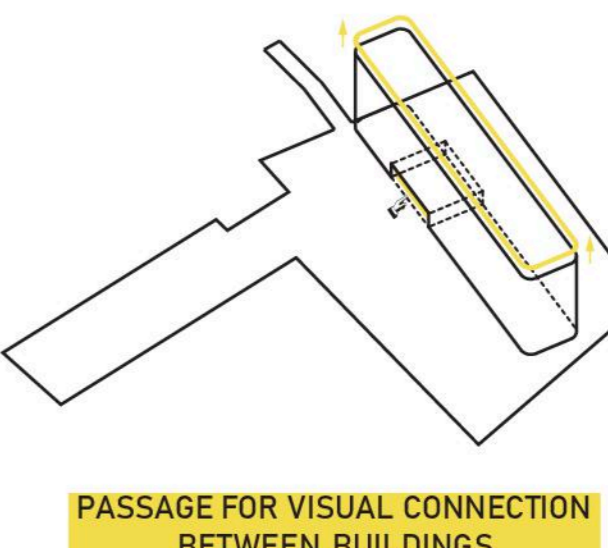
The shape of a building is very important because it determines the cost of the envelope and the amount of embodied energy required in addition to the operation of the building. The shape affects the area perimeters and sizes of vertical components of the building. These include: the internal and external walls as well as their associated finishes, windows and doors, frame structure, fascia, and the eaves of roofs. To increase the energy efficiency we have chosen a simple shape as it is more cost efficient to maintain.



Scale includes the height, length and width of apartment buildings, which help create the dimensions of outdoor space. Higher buildings result in cavernous settings when grouped together, and conspicuous voids when spread apart. Most buildings in Walker's Point, historic or not, are contributing to the overall authenticity and character of the neighborhood. To make the pedestrian experience more pleasant in the project area, we have shortened the building towards the street to minimize the scale of the building.



The rounded shape has great value when it comes to buildings. There is interesting science at play that proves buildings with rounded corners are more comfortable, more energy efficient and even safer. By curving the edges of the building we are increasing energy efficiency and the acoustic comfort. From a visual perspective, rounded corners are more pleasant-looking as it softens the mass and the building does not look as sharp.



To connect the new apartment building otherwise known in the task as the building B with the existing building otherwise known as building A in the task, we have decided to make a passage on the first floor, visually connecting the main entrance of the existing building and the external area. We have also decided to expand the green area by building a green roof that acts as an extended living and recreation space for the inhabitants.

